

SPORT OPTICS 2010-11

Let The Adventure Begin!

CONTENTS

CHOOSING A BINOCULAR	3-5
UPCLOSE BINOCULARS	6-8
OUTLAND BINOCULARS	9
NATURE BINOCULARS	10
SPECIALTY BINOCULARS	11
SKYMASTER BINOCULARS	12-14
CHOOSING A SPOTTING SCOPE	15-16
ULTIMA SPOTTING SCOPES	17
REGAL F-ED SPOTTING SCOPES	18
MINI MAK SPOTTING SCOPES	19
MAK / C5 / REFRACTOR SPOTTING SCOPES	20
VISTAPIX IS70 / ELECTRIC ZOOM SPOTTING SCOPES	21
FIRSTSCOPE TELESCOPE	22
SPECIALTY TELESCOPES	23
POWERSEEKER TELESCOPES	24-25
ASTROMASTER TELESCOPES	26-27
LCM TELESCOPES	28-29
NEXSTAR SLT TELESCOPES	30-31
SKYSCOUT PERSONAL PLANETARIUM / SKYSCOUT ACCESSORIES	32
DIGITAL MICROSCOPES	33-35
MAGNIFIERS AND LOUPES	35

ICON DESIGNATIONS

Look for one or more of the following icons as a quick reference guide for the intended use of each binocular and spotting scope line.



ACCESSORIES

To maximize the enjoyment of your Celestron sport optics product, we recommend the following accessories. For more information, consult your Authorized Celestron Dealer or visit us at: www.celestron.com.

BINOCULAR TRIPOD ADAPTER

This adapter allows you to mount your binocular (porro or roof) to a tripod for added stability and convenience.

Model # 93524



CAR WINDOW MOUNT

View through your spotting scope from the comfort of your vehicle. Spotting scope attaches easily using the quick release mount.

Model # 93602



PHOTO TRIPOD

This sturdy aluminum tripod will provide a stable platform for your smaller binocular or spotting scope. Fully adjustable legs and quick release mount.

Model # 93606



WELCOME TO THE WORLD OF CELESTRON SPORT OPTICS

This catalog introduces you to the extensive selection of sport optics products that have earned Celestron a well-deserved reputation for providing products with optical excellence and outstanding design at an affordable price. Celestron is also recognized as a world leader in the design and manufacturing of high-quality computerized and non-computerized telescopes that are used by all levels of amateur astronomers. In keeping with this reputation, we only offer binoculars and spotting scopes that are manufactured to meet our rigorous and uncompromising standards. Celestron optical instruments deliver excellent resolution and contrast. Our binoculars and spotting scopes combine the highest quality precision optics and the most modern, user-oriented design features to produce visual instruments that perform exquisitely year after year. Celestron sport optics products offer versatility in viewing any subject of interest to you, be it a sporting event, wildlife, bird watching, scenic views in nature, travel, sailing – even the far reaches of the night sky. Inherent in the design of all of these products is our mission to provide the highest quality optical products at a competitive price.

All Celestron products are designed and intended for those 13 years of age and older.

ALL CELESTRON BINOCULARS ARE COVERED BY OUR NO FAULT LIFETIME WARRANTY

PARTS OF A BINOCULAR



For complete product descriptions, specifications, and warranty information, please visit: www.celestron.com



CHOOSING A BINOCULAR

WHICH BINOCULAR IS RIGHT FOR YOU?

WHICH BINOCULAR IS RIGHT FOR YOU?

Celestron offers binoculars suited to a wide variety of uses including bird watching, boating, camping, hunting, sporting events, concerts, surveillance, astronomy, travel, and more. Whatever your optical needs might be, Celestron has a binocular style and size that's right for you.

Determining which binocular is the best for any particular use or situation depends on variables such as environment, individual preference, activity, and the range of different viewing circumstances in which you will use it.

We encourage you to look through this catalog at the different models, then ask your Celestron dealer for a demonstration. Whichever Celestron binocular you select, you can rest assured that you'll receive the utmost quality and value for your investment.

HOW TO EVALUATE OPTICAL QUALITY

The brilliance and sharpness of the image you see through a particular binocular is determined by a number of different factors. Magnification, optical coatings, and lens diameter are just a few of the factors influencing how a binocular performs.

However, the single most important criteria in performance will always be the quality of the optics. Celestron delivers optical excellence through careful consideration of quality in the glass and lens coatings used, precision manufacturing processes, and uncompromising quality control.

FACTORS TO KEEP IN MIND WHEN CHOOSING A BINOCULAR

MAGNIFICATION

Magnification is the degree to which the object being viewed is enlarged. For example, with a 7x42 binocular, the number 7 represents the "binocular power". A 7-power binocular magnifies an image to seven times the size it would be when viewed by the normal, unaided human eye. The level of power affects the brightness of an image, so the lower the power of a binocular, the brighter the image

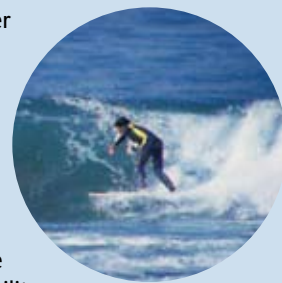
will be. In general, increasing power will reduce both field of view and eye relief.

DIAMETER (OBJECTIVE LENS)

The objective lenses of binoculars are the larger lenses in the front of the binocular that the light passes through. The diameter of one of these lenses, given in millimeters (mm), will be the second number describing a particular binocular. Hence, a 7x42 binocular has an objective lens diameter of 42 mm. The diameter of the lens determines the light gathering ability of the binocular, with the greater light gathering ability of a larger lens translating into greater detail and image brightness. This is especially useful in low light conditions and at night. Doubling the size of the objective lenses quadruples the light gathering ability of the binocular. For instance, a 7x50 binocular has twice the light gathering ability of a 7x35 binocular and four times the light gathering ability of a 7x25 binocular. This might lead you to assume that bigger is better when it comes to the diameter size of the objective lenses, but in reality, the size of the lens must be considered along with exit pupil and intended usage to determine the best binocular for you.



1x Unaided Eye



7x

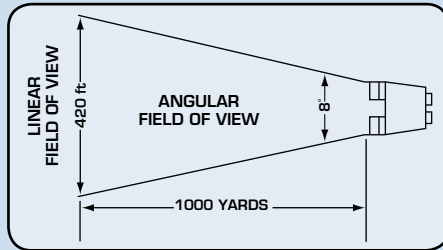
EXIT PUPIL

The diameter, in millimeters, of the beam of light that leaves the eyepiece of a particular pair of binoculars is the "exit pupil". The larger the exit pupil, the brighter the image obtained will be (except in bright daylight where your eye's pupil shrinks).

Having a large exit pupil is advantageous under low light conditions and at night. For astronomical applications, the exit pupil of the binocular should correspond with the amount of dilation of your eye's pupil after it has adapted to the dark. To calculate the exit pupil, divide the size of the objective lens by the magnification of the binocular. For example, the exit pupil of a 7x42 binocular is calculated as $42/7 = 6$ mm.

FIELD OF VIEW (FOV)

The size of the area that can be seen while looking through a pair of binoculars is referred to as the field of view. The angular field of view is usually indicated on the outside of the binocular, in degrees.

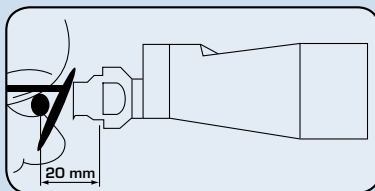


The linear field of view refers to the area that can be observed at 1,000 yards, and is expressed in feet. A larger field of view translates to a larger area seen through the binocular. Field of view is related to magnification, with greater magnification creating a smaller field of view. Also a wider field of view generally results in less eye relief. A large field of view is especially desirable in situations where the object viewed is likely to move, or when the user is moving. You can use angular field of view to calculate the approximate linear field of view by multiplying the angular field of view by 52.5.

For example, if the angular field of view of a particular binocular is 8 degrees, then the linear field of view will be 420 feet (8×52.5).

EYE RELIEF

This refers to the distance, in millimeters, that a binocular can be held from the eye with the full field of view still being comfortably observed. Eyeglass wearers in particular benefit from longer eye relief.



NEAR FOCUS

The distance between the binocular and the nearest object you can focus on, while maintaining a good image and sharp focus, defines the near focus of a binocular.

BRIGHTNESS

A binocular's ability to gather and transmit enough of the available light to give a sufficiently bright and sharp image defines its brightness. The brightness of a binocular also enhances color differentiation in the image observed. R.B.I. (Relative Brightness Index), Twilight Factor and R.L.E. (Relative Light Efficiency) are common indices used in the binocular industry, but are all somewhat flawed in their design and often prove fairly meaningless. Brightness is one criteria to be considered when purchasing binoculars, but is not the most important factor. Brightness is dependent on several factors including objective lens diameter, magnification, the type and quality of the objective lens glass, type of lens coatings and type of prisms used. In general, large objective lenses, low magnification and fully multi-coated lenses are most desirable.



CHOOSING A BINOCULAR

PRISMS

Binocular prisms serve to invert the image and come in one of two basic designs: roof prism or porro prism. By design, roof prisms are more lightweight and compact for portability. Prisms are designated either BK7 (boro-silicate) or BAK-4 (barium crown). Both are economical and highly effective designs. The finer glass in the BAK-4 design is of a higher density (refractive index) and virtually eliminates internal light scattering, producing sharp, well-defined images.

CONTRAST

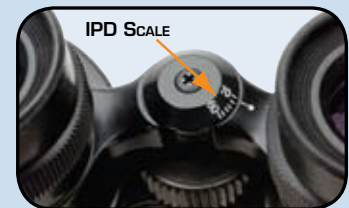
Contrast refers to the degree to which both dim and bright objects can be differentiated from each other and from the background of the image. High contrast helps in observing fainter objects and discerning subtle visual details. Contrast is affected by the resolution. The finer the resolving power (in general), the better the contrast. High quality optical coatings provide better contrast in an image. The other factors affecting contrast include collimation, air turbulence, objective lens, prism and eyepiece quality.

RESOLUTION

Resolution is the measurement of a binocular's ability to distinguish fine detail and produce a sharp image. Better resolution also delivers more intense color. Resolution is related directly with the size of the objective lenses. Generally, a larger objective lens will deliver more detail to the eye than a smaller objective lens, regardless of the magnification of the binocular. Actual resolution is determined by the quality of the optical components, the type and quality of the optical coatings, atmospheric conditions, collimation (i.e. proper optical alignment), and the visual acuity of the user.

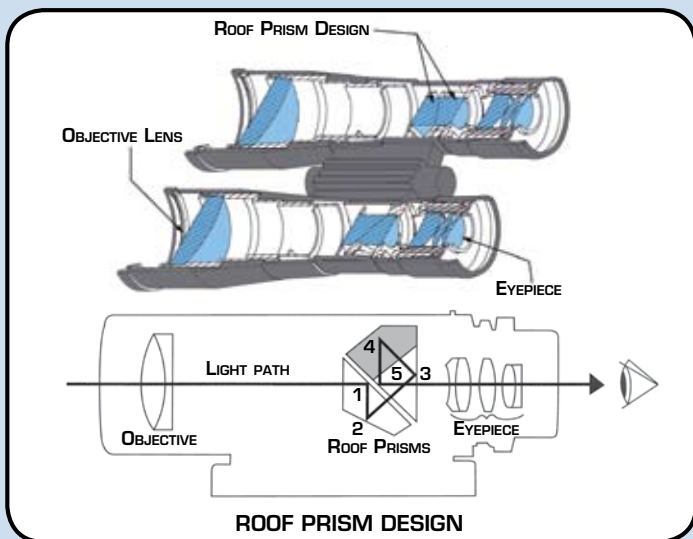
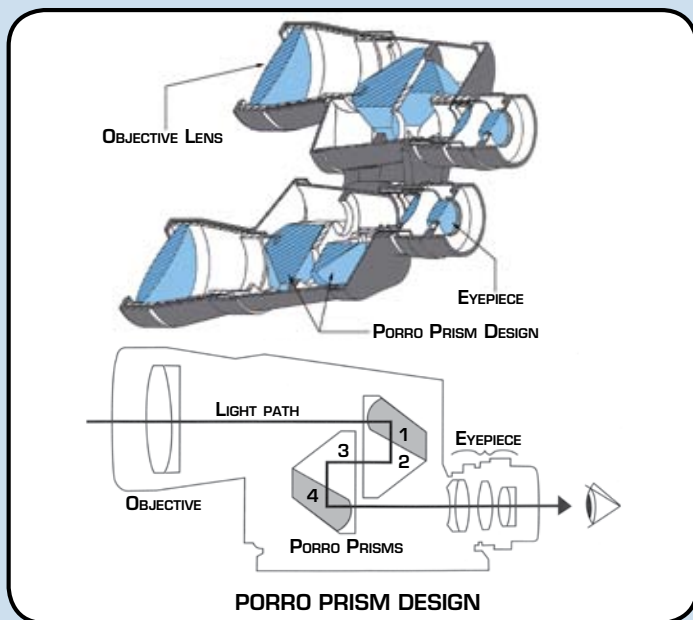
COLLIMATION

Collimation is the alignment of the optical elements of the binocular to the mechanical axis. Good collimation prevents eyestrain, headaches and inferior and double images while improving resolution.



INTERPUPILLARY DISTANCE

Since the distance between eyes varies, both eyepieces also need to be adjustable for individual use. Most binoculars are designed with a hinge that allows the user to move the eyepieces closer together or farther apart. This is called "adjusting the interpupillary distance" (IPD).



FOCUSING

A focusing mechanism allows you to reach sharp focus on objects at different distances. Most binoculars have either a center focus or individual focus mechanism.

CENTER FOCUS – This focusing mechanism uses a single wheel to move both eyepieces in and out to achieve focus. However, since a person's vision is slightly different from one eye to the other, center focus binoculars use a diopter adjustment to compensate. The diopter adjustment permits one of the eyepieces (usually the right) to be individually "fine focused" to the needs of each person's eyes.

INDIVIDUAL FOCUS – Allows for extra-precise focusing adjustments for image sharpness and clarity. Individual focus binoculars allow each eyepiece to be rotated and focused individually, eliminating the need for a diopter adjustment.

OPTICAL COATINGS

The optical elements (10 to 18 glass surfaces) of the binocular are coated to reduce internal light loss and glare, which in turn ensures even light transmission, resulting in greater image sharpness and contrast. Choosing a binocular with good lens coatings ensures

greater satisfaction with the product you ultimately select. Lens coatings range in quality as listed below from lowest quality to highest quality:

UNCOATED – No glass surfaces are coated. Less than 50% of the light is transmitted through the binocular resulting in very low contrast images with a lot of glare making them virtually unusable.

COATED – One or more surfaces are coated. Overall quality is poor.

FULLY COATED – All air-to-glass surfaces are coated with a single layer of anti-reflecting magnesium fluoride coating (MgF2). Throughput transmission is typically close to 80% and more than acceptable for most users.

MULTI-COATED – One or more surfaces are coated with multiple layers of a chemical compound and the other surfaces are fully coated. Multi-coatings increase light transmission resulting in brighter and sharper images with higher contrast levels.

FULLY MULTI-COATED – All air-to-glass surfaces are coated with multiple layers of a chemical compound. Fully multi-coated binoculars maximize throughput light transmission in a range of 90-95%. The result is extremely bright and sharp images with maximum contrast.

PRODUCTS

UPCLOSE BINOCULARS	6-8
Our economically priced compact Roof Prism, full size Porro Prism and No Focus Power Prism binoculars. These binoculars will handle your most demanding viewing challenges.	
OUTLAND BINOCULARS	9
The rugged Outland waterproof series is designed to perform under tough outdoor conditions.	
NATURE SERIES BINOCULARS	10
The high performance Roof and Porro Prism binoculars with fully multi-coated optics.	
SPECIALTY BINOCULARS	11
More than just binoculars, our Specialty models offer value added features for those who expect just a little bit more.	
SKYMASTER BINOCULARS	12-14
These large aperture binoculars are ideal for astronomical (sky) viewing or terrestrial (land) use – especially over long distances.	
ULTIMA SPOTTERS	17
Out of the box it's ready for action! The highly acclaimed Ultima Series features a zoom eyepiece and multi-coated optics.	
REGAL F-ED SPOTTERS	18
Our top of the line spotting scopes with Fluoro ED glass offers ultimate views for the discriminating user.	
MINI MAK / MAK / C5 / REFRACTOR SPOTTERS	19-20
Our MAK series brings portability and versatility to a new level. These scopes are great for terrestrial (land) and astronomical use.	
VISTAPIX IS70 / ELECTRIC ZOOM SPOTTERS	21
The VistaPix Imaging Spotter (IS) from Celestron. Capture the action closer than ever before with this 3MP digital camera spotting scope. The ultra portable electric zoom refractor offers good quality at an economical price.	
TELESCOPES	22-31
We offer six complete lines of telescopes for the budding astronomer. Our FirstScope, Specialty, PowerSeeker, AstroMaster, LCM and NexStar SLT telescopes offer quality optics at a price to fit anyone's budget.	
SKYSCOUT AND ACCESSORIES	32
The SkyScout is a revolutionary handheld device that uses advanced GPS technology with point and click convenience to identify thousands of stars, planets, constellations and more.	
DIGITAL MICROSCOPES	33-35
Celestron is proud to offer these hot new digital microscopes. We're taking traditional microscope design and moving it into the digital realm.	
MAGNIFIERS AND LOUPES	35

UpCLOSE[®] Roof Prism

HIDE AND SEEK!

Small enough to tuck away in a pocket, purse, backpack, or vehicle storage compartment, the UpClose Roof Prism Series from Celestron is perfect for catching that great view at a moment's notice.



UpClose 8x21
#71132

UpCLOSE ROOF PRISM FEATURES

- Fully coated optics
- Protective rubber covering
- Ultra compact design with folding center bridge
- Diopter adjustment for precise focusing
- Water resistant body
- Nylon carrying case
- No Fault Lifetime Warranty

UpCLOSE – ROOF PRISM

Item #	71132	71133	71134	71135
Size	8x21	10x25	12x25	16x32
Type	Roof	Roof	Roof	Roof
Prisms	BK7	BK7	BK7	BK7
Coating	Fully Coated	Fully Coated	Fully Coated	Fully Coated
Weather Proof	Water Resistant	Water Resistant	Water Resistant	Water Resistant
Angular Field of View (FOV)	7°	5.5°	4.5°	3.7°
Linear (FOV) ft@ 1000 yds	367	288	236	194
Exit Pupil	2.6 mm	2.5 mm	2.1 mm	2.0 mm
Eye Relief	11 mm	10 mm	10 mm	10 mm
Near Focus	7 ft	18 ft	14 ft	25 ft
Weight	6 oz	9 oz	9 oz	12 oz
Tripod Adaptable	No	No	No	No
IPD (mm)	30-75	35-80	35-80	40-80
Warranty	No Fault	No Fault	No Fault	No Fault





UpCLOSE® PORRO PRISM

UpClose
10-30x50 Zoom
#71140

UpCLOSE PORRO PRISM FEATURES

- Rubber covered
- Fully coated optics
- Diopter adjustment for fine focusing
- Rubber covering for a firm grip
- Water resistant body and nylon carrying case
- Tripod adaptable
- No Fault Lifetime Warranty

UpCLOSE — PORRO PRISM

NEW!

Item #	71136	71142	71148	71137	71144	71140
Size	7x35	8x40	7x50	10x50	20x50	10-30x50 Zoom
Type	Porro	Porro	Porro	Porro	Porro	Porro
Prisms	BK7	BK7	BK7	BK7	BK7	BK7
Coating	Fully Coated	Fully Coated	Fully Coated	Fully Coated	Fully Coated	Fully Coated
Weather Proof	Water Resistant	Water Resistant	Water Resistant	Water Resistant	Water Resistant	Water Resistant
Angular Field of View (FOV)	8°	8.2°	6.8°	7°	3.2°	4.1°
Linear (FOV) ft@ 1000 yds	419	430	357	367	168	215
Exit Pupil	5 mm	5 mm	7.1 mm	5 mm	2.5 mm	5 mm@10x
Eye Relief	11 mm	12 mm	13 mm	11 mm	7 mm	14 mm
Near Focus	15 ft	16 ft	16 ft	24 ft	36 ft	27 ft@10x
Weight	24 oz	26 oz	33 oz	30 oz	31 oz	36 oz
Tripod Adaptable	Yes	Yes	Yes	Yes	Yes	Yes
IPD (mm)	55-75	55-75	55-75	55-75	55-75	60-75
Warranty	No Fault	No Fault	No Fault	No Fault	No Fault	No Fault



UpCLOSE® No Focus Porro Prism



UpClose No Focus 8x40
#71301



UpClose No Focus 7x50
#71302



UpClose No Focus 10x50
#71303

UpCLOSE No Focus SERIES FEATURES

- Fully coated optics
- No focus knob or diopter adjustment
- Protective rubber covered body
- Water resistant
- Tripod adaptable
- Full size porro prism design
- Soft carrying case
- No Fault Limited Lifetime Warranty

UpCLOSE No Focus - PORRO PRISM

Item #	71300	71301	71302	71303
Size	7x35	8x40	7x50	10x50
Type	Porro	Porro	Porro	Porro
Prisms	BK7	BK7	BK7	BK7
Coating	Fully Coated	Fully Coated	Fully Coated	Fully Coated
Weather Proof	Water Resistant	Water Resistant	Water Resistant	Water Resistant
Angular Field of View (FOV)	9°	8°	6.4°	6.6°
Linear (FOV) ft@1000 yds	473	420	336	347
Exit Pupil	5 mm	5 mm	7.1 mm	5 mm
Eye Relief	20 mm	19 mm	24 mm	20 mm
Near Focus	37 ft	39 ft	39 ft	53 ft
Weight	23 oz	25 oz	30 oz	30 oz
IPD (mm)	54-73	54-73	54-73	54-73
Warranty	No Fault	No Fault	No Fault	No Fault



NEW!

FIXED FOCUS!

Features fixed focus optics, just pick them up and use them without concern for focusing adjustments.





OUTLAND[®] ROOF PRISM

TAKING IT TO THE NEXT LEVEL!

The Outland Waterproof Series from Celestron is a spectacular value in rugged roof prism binoculars.

Outland 10x42
#71168



Outland 10x25
#71166



OUTLAND WATERPROOF SERIES FEATURES

- Multi-coated optics
- Waterproof and fogproof
- Protective rubber covering
- Twist-up eyecups for quick adjustment for optimum eye relief (full-size models)
- Molded finger impressions for a firm grip in any weather condition
- Moisture resistant neoprene carrying case
- No Fault Lifetime Warranty

OUTLAND

Item #	71165	71166	71167	71168
Size	8x25	10x25	8x42	10x42
Type	Roof	Roof	Roof	Roof
Prisms	BAK-4	BAK-4	BAK-4	BAK-4
Coating	Multi-Coated	Multi-Coated	Multi-Coated	Multi-Coated
Weather Proof	Waterproof	Waterproof	Waterproof	Waterproof
Angular Field of View (FOV)	6.2°	5.2°	6.0°	6.0°
Linear (FOV) ft@1000 yds	325	272	315	315
Exit Pupil	3.1 mm	2.5 mm	5.25 mm	4.2 mm
Eye Relief	17 mm	16 mm	22 mm	22 mm
Near Focus	13 ft	13 ft	8 ft	8 ft
Weight	14 oz	14 oz	23 oz	23 oz
Tripod Adaptable	No	No	Yes	Yes
IPD (mm)	50-70	50-70	55-75	55-75
Warranty	No Fault	No Fault	No Fault	No Fault



NATURE PORRO/ROOF PRISM

NEW!

CONQUER THE ELEMENTS!

The Nature Series takes you to an even higher performance level. Significant features include fully multi-coated optics and high definition views.



Nature 10x50
#71321



Nature 10x42
#71327

NATURE SERIES FEATURES

- Fully multi-coated optics
- Waterproof and fogproof
- Precision BaK-4 prisms
- Twist-up eyecups
- Rugged aluminum main body
- Rubber covered body protects the optics
- No Fault Lifetime Warranty



NATURE SERIES

These binoculars feature state-of-the-art design with a modern open frame style. Fully multi-coated optics and high precision BaK-4 prisms enhance the optical quality with maximum contrast and color rendition. The rugged aluminum main body has a rubber covering for additional protection for the optics. Twist up eyecups provide easy adjustment for your eyes. The Nature series is waterproof & fogproof with nitrogen filled gas for added protection when out in damp environments.



NATURE

Item #	71319	71320	71321	71326	71327
Size	8x30	8x42	10x50	8x42	10x42
Type	Porro	Porro	Porro	Roof	Roof
Prisms	BaK-4	BaK-4	BaK-4	BaK-4	BaK-4
Coating	Fully Multi-Coated	Fully Multi-Coated	Fully Multi-Coated	Fully Multi-Coated	Fully Multi-Coated
Weather Proof	Waterproof	Waterproof	Waterproof	Waterproof	Waterproof
Angular Field of View (FOV)	8.2°	7°	5.6°	7°	6.5°
Linear (FOV) ft@1000 yds	430	367	294	369	342
Exit Pupil	3.8 mm	5.3 mm	5 mm	5.3 mm	4.2 mm
Eye Relief	18 mm	20 mm	20 mm	18 mm	16 mm
Near Focus	8 ft	15 ft	25 ft	9.2 ft	9.8 ft
Weight	17 oz	31 oz	36 oz	27 oz	27 oz
Tripod Adaptable	Yes	Yes	Yes	Yes	Yes
IPD (mm)	52-72	56-72	56-72	56-74	56-74
Warranty	No Fault	No Fault	No Fault	No Fault	No Fault



SPECIALTY BINOCULARS



8-24x25 Zoom
#72121

8-24x25 ELECTRIC POWER ZOOM BINOCULAR FEATURES

- Fully Coated Optics
- High Quality BK-7 Prisms
- Water Resistant
- Electric Power Zoom – 8 to 24 Power
- Soft Carrying Case
- No Fault Lifetime Warranty

SPECIALTY

Item #	71189	72121	72122
Size	7x50 IF/RC	8-24x25 Zoom	10x25
Type	Porro	Porro	Roof
Prisms	BAK-4	BK-7	BK-7
Coating	Multi-Coated	Fully Coated	Fully Coated
Weather Proof	Waterproof	Water Resistant	Water Resistant
Angular Field View (FOV)	7°	4.4°	5.6°
Linear FOV (ft@1000 yds)	367	231	288
Exit Pupil	7.1 mm	3.1 mm	2.5 mm
Eye Relief	26 mm	10 mm@8x	10 mm
Near Focus	18 ft	16 ft@8x	16 ft
Weight	38 oz	12 oz	13 oz
Tripod Adaptable	Yes	No	No
IPD (mm)	60 -75	n/a	n/a
Warranty	No Fault	No Fault	No Fault



10x25 DIGITAL COMPASS BINOCULAR FEATURES

- Fully Coated Optics
- High Index BK-7 Prisms
- 1.6" (41 mm) LCD Display
- Features Digital Compass ($\pm 30^\circ$), Time, Temperature (F/C), and Stop Watch (up to 1 Hr.)
- Water Resistant
- Soft Carrying Case
- No Fault Lifetime Warranty



10x25
#72122

7x50 IF/RC OCEANA BINOCULAR FEATURES

- Backlit illuminated liquid dampened magnetic compass; excellent navigational tool for land or sea
- Horizontal and vertical etched reticle to help determine relative size of objects
- Range finding dial calculates actual object distance or size
- Completely waterproof – dry nitrogen charged and sealed with internal O-rings to prevent internal fogging - unaffected by climate and temperature changes
- Individual eyepiece focus with diopter scale for quick and accurate focusing
- Excellent depth of field for minimal focus adjustments
- Nautical style padded canvas case and straps
- Attached objective caps
- Tripod adapter fitting for tripod mounting
- No Fault Lifetime Warranty



7x50 IF/RC
#71189

SKYMASTER[®]

PORRO PRISM



SkyMaster 9x63
#72023



SkyMaster 15x70
#71009

Celestron's SkyMaster Series of large aperture binoculars are a phenomenal value for high performance binoculars. Ideal for astronomical viewing or for terrestrial (land) use, especially over long distances. SkyMaster models feature high quality BAK-4 prisms and multi-coated optics for enhanced contrast. Celestron has designed and engineered the larger SkyMaster models to meet the special demands of extended astronomical or terrestrial viewing sessions. For maximum stability and secure optical alignment, the 80 mm and 100 mm SkyMaster models feature enhanced structural reinforcement to the main binocular body. As an additional convenience, the 80 mm and 100 mm SkyMaster models also include an integral super rigid photo tripod adapter. The SkyMaster Series binoculars are built to provide years of magnificent views of the world around you and the heavens above.

The 8x56 and 9x63 models are waterproof and feature a shock-resistant rubber covering and twist-up eyecups. They also provide superb image quality with BAK-4 prisms and fully multi-coated optics. Their excellent depth of field gives a good overview without the need for constant refocusing.

SKYMASTER® PORRO PRISM

THINGS ARE
DEFINITELY
LOOKING UP!

SKYMASTER SERIES FEATURES

- Waterproof (56 mm, 63 mm, 80 mm, and 100 mm) and water-resistant (70 mm) models
- Multi-coated optics
- High quality BAK-4 prisms
- Large aperture perfect for low light conditions and stargazing
- Integrated tripod adapter rod (80 mm & 100 mm)
- Long eye relief ideal for eyeglass wearers
- Diopter adjustment for fine focusing (100 mm individual focus system)
- No Fault Lifetime Warranty



SkyMaster 20x80
#71018

SKYMASTER

NEW!

Item #	71009	71008	71018	71017	72022	72023
Size	15x70	25x70	20x80	25x100	8x56	9x63
Type	Porro	Porro	Porro	Porro	Porro	Porro
Prisms	BAK-4	BAK-4	BAK-4	BAK-4	BAK-4	BAK-4
Coating	Multi-Coated	Multi-Coated	Multi-Coated	Multi-Coated	Fully Multi-Coated	Fully Multi-Coated
Weather Proof	Water Resistant	Water Resistant	Waterproof	Waterproof	Waterproof	Waterproof
Angular Field of View (FOV)	4.4°	2.7°	3.7°	3°	5.8°	5°
Linear (FOV) ft@ 1000 yds	230	141	195	157	304	262
Exit Pupil	4.7 mm	2.8 mm	4 mm	4 mm	7 mm	7 mm
Eye Relief	18 mm	13 mm	18 mm	15 mm	18 mm	17 mm
Near Focus	43 ft	75 ft	108 ft	80 ft	25 ft	35 ft
Weight	48 oz	52 oz	75 oz	140 oz	38 oz	44 oz
Tripod Adaptable	Included	Included	Built-in	Built-in	Yes	Yes
IPD (mm)	56-72	56-72	56-72	56-72	58-72	58-72
Warranty	No Fault	No Fault	No Fault	No Fault	No Fault	No Fault



SKYMASTER[®]

ZOOM PORRO PRISM

EASIER
TO SEE
DETAILS AT
EXTREME
POWERS.



SkyMaster 20-100x70 Zoom
#71012

SKYMASTER ZOOM SERIES FEATURES

- Multi-coated optics
- High quality BAK-4 prisms
- Large aperture perfect for low light conditions and stargazing
- Long eye relief ideal for eyeglass wearers
- Diopter adjustment for fine focusing
- Weather Resistant
- No Fault Lifetime Warranty

SKYMASTER ZOOM

Item #	71012	71020
Size	20-100x70 Zoom	25-125x80 Zoom
Type	Porro	Porro
Prisms	BAK-4	BAK-4
Coating	Multi-Coated	Multi-Coated
Weather Proof	Weather Resistant	Weather Resistant
Angular Field View (FOV)	1.25°	1.25°
Linear FOV (ft@1000 yds)	65 mm	65 mm
Exit Pupil	3.5 mm @ 20x	3.2 mm @ 25x
Eye Relief	22 mm @ 20x	13 mm @ 25x
Near Focus	72 ft @ 20x	98 ft @ 25x
Weight	53 oz	76 oz
Tripod Adaptable	Included	Built-in
IPD (mm)	56-72	56-72
Warranty	No Fault	No Fault



HERE ARE SOME IMPORTANT CRITERIA THAT YOU MAY WISH TO CONSIDER WHEN SELECTING A SPOTTING SCOPE.

COATINGS

Optical coatings determine the throughput transmission of a spotting scope. The better the quality of the lens coatings, the brighter the image will be and the higher the image's contrast. Fully multi-coated lenses are the best quality you can choose.

EXTRA LOW DISPERSION GLASS OPTICS (ED)

Several models of Celestron's premium spotting scopes feature Extra Low Dispersion Glass which provides excellent color correction and razor sharp images for serious hunting, nature and bird watchers. It also virtually eliminates chromatic aberration.

CONSTRUCTION

Both mechanical and optical construction are important. Alignment of the optical elements (collimation) is critical for achieving optimal results. All Celestron spotting scopes are collimated at the factory to ensure comfortable viewing, even during extended viewing sessions.

DIAMETER OF OBJECTIVE LENS

A spotting scope is a telescope that produces an upright image. The major function of a spotting scope, like all telescopes, is to gather light. The larger the diameter of the spotting scope's objective lens, the more light it gathers, with more light translating into a brighter and better image. As the size of the objective lens increases, greater detail and clarity of image will be afforded.

MAGNIFICATION (POWER)

Magnification is the degree to which the object being viewed is enlarged. Magnification, or power, in a spotting scope is a function of the relationship of two independent optical systems – the optics of the spotting scope itself and the eyepiece being used. By exchanging an eyepiece of one focal length for another eyepiece with a different focal length, you can increase or decrease the magnification of the spotting scope. There is, however, a limit to how much you can magnify an image. As a rule of thumb, the maximum magnification is equal to 50 to 60 times the diameter (in inches) of the spotting scope's objective lens (under ideal conditions). Magnification higher than this will produce a dim and fuzzy image. In most cases, a magnification of 20 to 35x is the most useful and satisfying range to use with spotting scopes under normal daytime conditions. Zoom spotting scopes have a single, built-in eyepiece to give you a range of magnifications without the need to change eyepieces.

FOCAL LENGTH

Focal length is the distance, in an optical system, from the objective lens to the point where the instrument is in focus (the focal point). The longer the focal length of the instrument, the larger the image scale it offers.

NEAR FOCUS

Near focus is the distance between the instrument and the nearest object you can focus on, while maintaining a good image and sharp focus. Short near focus is important for close-up visual and photographic work.

FIELD OF VIEW

The size of the area, in degrees, that can be seen while looking through the spotting scope is the angular field of view. Linear field of view refers to the width of the area that can be observed at 1,000 yards, and is expressed in feet. A larger field of view translates to a larger area seen through the spotting scope.

Field of view is related to magnification. In general, the greater the magnification the smaller the field of view. The angular field of view is calculated by dividing the apparent field of the eyepiece by the magnification being used. ($AFE \div \text{Magnification} = AFV$). Once the angular field of view is known, the linear field can be determined by multiplying the angular field by 52.5.

FOCAL RATIO OR PHOTOGRAPHIC SPEED (f/STOP)

Focal ratio is the ratio of the focal length of the spotting scope to the diameter (aperture) of its objective lens, in millimeters. Spotting scopes with small f/stop numbers react to incoming light faster than spotting scopes with larger f/stop numbers. So, the smaller the f/stop number, the shorter your photographic exposure time.

EXIT PUPIL

The diameter, in millimeters, of the beam of light that leaves the eyepiece of the spotting scope is the "exit pupil". To calculate the exit pupil, divide the size of the objective lens, in millimeters, by the magnification of the eyepiece being used. The larger the exit pupil, the brighter the image.

EYE RELIEF

Eye relief is the minimum distance between the eyepiece of the spotting scope and your eye that still allows you to see the entire field of view.

CHOOSING A SPOTTING SCOPE



PORTABILITY

For applications such as hiking and hunting, portability is a prime factor to consider. For stationary viewing, a large diameter objective lens becomes of primary importance.

USE OF A TRIPOD

A spotting scope is usually mounted on a tripod, although they can be hand held. It is advisable to mount the spotting scope to a tripod to reduce the movement that accompanies the use of any optical instrument by hand.

VERSATILITY

Most Celestron spotting scopes can be used three different ways. First, as a telephoto lens when attached to a 35 mm SLR camera or digital camera. Second, for terrestrial (land) observing. Third, as a telescope. This is the ideal kind of versatility you should look for.

PARTS OF A SPOTTING SCOPE



Celestron's highly acclaimed Ultima Series is more versatile than ever. Ultima models are available in 45° and "straight-thru" eyepiece configurations. In addition, all Ultima models are waterproof. The Ultima Series feature multi-coated optics to provide exceptional clarity and brilliance. The Ultima 80 mm features excellent multi-coated optics offering 50% brighter images than the 65 mm. The largest aperture scope in the Ultima line, the 100 mm, provides the best performance in low light conditions.

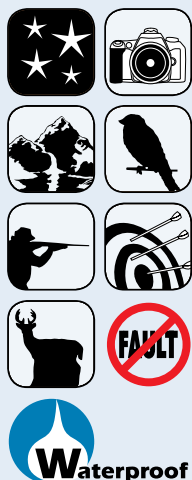
Ultima Series spotters perform extremely well under all light conditions which make them ideal for all types of outdoor viewing activities including bird watching, nature and wildlife, target shooting – even astronomy. The Ultimas are as great to look at as they are to look through. Their sleek design is accented with graceful contours that make them easy to hold and handle.

The Ultima Series spotters are the perfect choice for the outdoor enthusiast looking for a spotter with quality design and construction, superior optics, and versatility at an affordable price.

ULTIMA[®] REFRACTOR SPOTTING SCOPES

ULTIMA SERIES FEATURES

- 100 mm, 80 mm, 65 mm Aperture Spotting Scopes
- BAK-4 Prisms
- Multi-Coated Optics
- Zoom Eyepiece
- Waterproof
- Sighting Tube
- Soft Carrying Case
- No Fault Lifetime Warranty



ULTIMA

Item #	52248	52249	52250	52254	52252	52257
Model	Ultima 65 – 45° View	Ultima 65 – Straight View	Ultima 80 – 45° View	Ultima 80 – Straight View	Ultima 100 – 45° View	Ultima 100 – Straight View
Aperture	65 mm	65 mm	80 mm	80 mm	100 mm	100 mm
Focal Length	386 mm	386 mm	480 mm	480 mm	540 mm	540 mm
Power	18-55x	18-55x	20-60x	20-60x	22-66x	22-66x
Angular Field of View (FOV)	1.7°-.73°	1.7°-.73°	2°-1°	2°-1°	1.8-1°	1.8-1°
Linear (FOV) ft@1000 yds	89@18x 38@55x	89@18x 38@55x	105@20x 53@60x	105@20x 53@60x	95@22x 53@66x	95@22x 53@66x
Eye Relief (mm)	18@18x	18@18x	18@20x	18@20x	18@22x	18@22x
Near Focus (ft)	20@18x	20@18x	27@20x	27@20x	33@22x	33@22x
Coating	Multi-Coated	Multi-Coated	Multi-Coated	Multi-Coated	Multi-Coated	Multi-Coated
Length	13 in.	16 in.	16 in.	19 in.	19 in.	22 in.
Weight	2.3 lb	2.3 lb	3.6 lb	3.6 lb	4.5 lb	4.5 lb

REGAL[®] F-ED SPOTTING SCOPES

HIGHEST LEVELS
OF CONTRAST,
COLOR FIDELITY,
AND SHARPNESS.



The Regal Fluoro ED APO Spotting Scopes are the finest ever offered by Celestron! The APO optical design combined with fully multi-coated glass elements ensure the highest levels of contrast, color fidelity, and sharpness.

Celestron's Regal F-ED spotting scopes feature an air-spaced doublet, one element of which is made using the exotic mineral fluorite. The extra low dispersion from the fluorite provides excellent color correction and razor sharp

images while virtually eliminating chromatic aberration. Day or night, Regal F-ED spotting scopes are optimized to provide the sharpest images available. You'll love them for bird watching, nature observing, long distance viewing and casual astronomical observing. Because they are completely waterproof you can feel comfortable using them in extreme weather. The matte gray finish allows for subtle observation in any natural environment. Regal F-ED spotters are a great companion for any outdoor enthusiast.

REGAL F-ED SERIES FEATURES

- 45° Viewing Angle for Comfortable Viewing
- Fully Multi-Coated Optics for High Contrast
- Wide Angle Zoom Eyepiece is Standard
- Optional 1.25" Eyepieces Attach Easily
- Waterproof for Protection Against the Elements
- Rubber Covered for Durability
- Dual-Focus Knobs for Super Sharp Focus
- Twist-Up Eyecup for use With or Without Eyeglasses
- T-Adapter Included for Easy 35 mm/Digital SLR Imaging
- Soft Carrying Case Included
- No Fault Limited Lifetime Warranty

REGAL F-ED

Item #	52301	52302	52303
Model	Regal 65 F-ED	Regal 80 F-ED	Regal 100 F-ED
Aperture	65 mm	80 mm	100 mm
Focal Length / Focal Ratio	386 mm / f6	480 mm / f/6	540 mm / f/5.4
Magnification – Standard Zoom Eyepiece	16x-48x	20x-60x	22x-67x
Angular Field of View: low / high power	2.6° / 1.3°	2.1° / 1.0°	1.9° / 0.9°
Linear Field of View: ft @ 1000 yds – low / high power	136 / 68	112 / 56	100 / 50
Linear Field of View: m @ 1000 m – low / high power	45 / 23	37 / 19	33 / 17
Eye Relief @ low power	20 mm	20 mm	20 mm
Near Focus @ low power	15 ft / 4.6 m	20 ft / 6.1 m	26 ft / 7.9 m
Prisms	BAK-4	BAK-4	BAK-4
Length	13" / 330 mm	17" / 432 mm	20" / 508 mm
Weight	61 oz. / 1.7 kg	72 oz. / 2.0 kg	89 oz. / 2.5 kg





MINI MAK[®] SPOTTING SCOPES

**BRING
PORTABILITY AND
VERSATILITY
TO A NEW LEVEL!**

Celestron Mini Maks bring portability and versatility to a new level. The Maksutov optical design is recognized for being compact, easy to use, and applicable for both terrestrial (land) and astronomical use. The Mini Maks are a small but powerful series of spotting scopes that include a tabletop tripod which has built-in slow motion controls (#52233 features a panhandle control), a built-in zoom eyepiece capable of 90x magnification, and soft carrying case.

C50 MINI MAK FEATURES

- Maksutov-Cassegrain optical design with multi-coated optics
- Waterproof
- 45° eyepiece – zooms up to 75x
- 1.25" eyepiece adapter allows usage of any 1.25" eyepiece
- Table top tripod
- Soft carrying case
- No Fault Lifetime Warranty

C70 MINI MAK FEATURES

- Maksutov-Cassegrain optical design with multi-coated optics
- 45° eyepiece – zooms up to 75x
- 1.25" eyepiece adapter allows usage of any 1.25" eyepiece
- Table top tripod with slow motion controls
- Soft carrying case
- No Fault Lifetime Warranty



C50 Mini Mak
#52233



C70 Mini Mak
#52238

MINI-MAK

Item #	52233	52238
Size	C50 Mini Mak Waterproof	C70 Mini Mak
Aperture	50 mm	70 mm
Focal Length	580 mm	750 mm
Power	25-75x	25-75x
Angular Field of View (FOV)	1.3°-.7°	1.3°-.7°
Linear FOV (ft@1000 yds)	68@25x 35@75x	68@25x 35@75x
Eye Relief (mm)	20@25x	22@25x
Near Focus (ft)	10@25x	16@25x
Coating	Multi-Coated	Multi-Coated
Length	10 in.	11 in.
Weight	1.7 lb	2.0 lb.



MAK, C5 AND ZOOM REFRACTOR SPOTTING SCOPES



C90 MAK
#52268

NEW!

C90 MAK FEATURES

- Multi Coated Optics
- Maksutov-Cassegrain Optical Design
- Compact and Portable Design
- Erect Image System for Terrestrial and Astronomical Use
- Built-in T-Adapter threads for Ease of Adapting SLR Cameras
- Comes with 32 mm Eyepiece, 45° Erect Image Diagonal and 8x21 Erect Image Finderscope
- Water Resistant Backpack
- No Fault Limited Lifetime Warranty

**PERFECT FOR OUTDOOR LAND
AND WILDLIFE OBSERVATION, AS WELL AS HUNTING
AND CELESTIAL VIEWING!**

C5
#52291



Using the C5 for photography couldn't be easier. The C5 converts from a powerful spotting scope to a high performance 1250 mm effective focal length f/10 telephoto lens. To take professional quality images with the C5, simply attach an optional T- Adapter and T-Ring for your SLR camera to the rear of the C5 (or a digital camera with specific adapter) and you're ready to shoot.

C5 SPOTTER GENERAL FEATURES

- 5" Schmidt-Cassegrain Optical Design
- StarBright XLT Coatings
- 25 mm (50x) Eyepiece
- 45° Erect Image Diagonal
- 6x30 Erect Image Finderscope
- Water Resistant Soft-Sided Case
- Limited Lifetime Warranty

**PERFECT FOR OUTDOOR LAND AND WILDLIFE OBSERVATION,
AS WELL AS HUNTING AND TARGET SHOOTING!**

50 AND 60 MM ZOOM REFRACTOR

- Fully Coated Optics
- Refractor Optical Design
- 50 mm Zooms up to 45x
- 60 mm Zooms up to 60x
- Waterproof
- Metal Tabletop Tripod
- Aluminum Carrying Case
- Soft Carrying Case
- No Fault Limited Lifetime Warranty



60 mm Zoom Refractor
#52229

MAK/ZOOM REFRACTOR

Item #	52268	52291	52228	52229
Type	C90 MAK	C5	50 mm Zoom Refractor	60 mm Zoom Refractor
Aperture	90 mm	127 mm	50 mm	60 mm
Focal Length	1250 mm	1250 mm	303 mm	341 mm
Power	39x	50x	15-45x	20-60x
Angular Field of View (FOV)	1.3°	1°	2.5°@15x 1.3°@45x	2.5°@20x 1.3°@60x
Linear FOV (ft@1000 yds)	68@39x	53@50x	130@15x 65@45x	130@20x 65@60x
Eye Relief (mm)	20	22	15@15x 11@45x	15@20x 11@60x
Near Focus	15 ft	20 ft	19 ft@15x	29 ft@20x
Coating	Multi-Coated	Starbright XLT®	Fully Coated	Fully Coated
Length	16 in.	13 in.	10.6 in.	13.6 in.
Weight	5 lb	6 lb	1.1 lb	1.4 lb

VISTAPIX IS70 FEATURES

- 70 mm spotting scope will get you 14x closer to the action
- 2" color LCD screen provides sharp, clear imaging preview
- 3.1 megapixel image resolution
- Dual power camera for high magnification (24x) or wide field of view (7x)
- Digital focus meter for quick, sharp focus capability
- Camera shutter cable for vibration free imaging
- 6x digital zoom
- Rotatable tripod adapter fits standard photo tripods or Celestron computerized mounts
- Continuous video capability
- View images on your TV screen with included video cable
- Retouch and modify images with included Photobase and Panorama Maker software
- Includes protective carrying case for travel and storage
- Best warranty in the business (2 year)

VISTAPIX IS70

Item #	52212
Model	VistaPix IS70
Aperture	70 mm
Focal Length	210 mm
Power	14x
Angular Field of View (FOV)	4°
Linear FOV (ft@1000 yds)	210
Eye Relief	13 mm
Near Focus	15 ft
Coating	Fully Coated
Length	18 in.
Weight	3.5 lb



CAPTURE RARE MOMENTS IN THE FIELD.

Capture the action closer than ever before with this 3.1MP digital camera spotting scope. Unique product, advanced features, unbeatable price.

High quality spotting scope and state-of-the-art digital camera in one full-featured, easy-to-use unit.

ELECTRIC ZOOM FEATURES

- Refractor Optical Design
- Multi-Coated Optics
- Waterproof
- Fogproof
- Exit Pupil – 5.7 mm
- Twist-Up Eyecup
- Tripod Adaptable
- Electric Power Zoom – 7 to 21 Power
- Soft Carrying Case
- Battery – CR123A Lithium (supplied standard)
- No Fault Limited Lifetime Warranty



ELECTRIC ZOOM

Item #	52201
Size	7-21x40
Type	Refractor
Coating	Multi-coated
Weatherproof	Waterproof
Angular Field of View (FOV)	4.5 (7x)
Linear FOV (ft@1000 yds)	234 @7x
Eye Relief	22 mm @ 7x
Near Focus	7ft @ 7x/2m @ 7x.
Weight	.5 lb

A UNIQUE
SPOTTING SCOPE
FEATURING AN
ELECTRIC ZOOM
SO YOU CAN QUICKLY
AND QUIETLY
CHANGE THE POWER
FROM 7X TO 21X.



FIRSTSCOPE TELESCOPE



THE FIRSTSCOPE PAYS TRIBUTE TO
GALILEO GALILEI AND MANY OF HISTORY'S MOST
NOTABLE ASTRONOMERS



THE FINEST BEGINNER
TELESCOPE IN THE WORLD!

FIRSTSCOPE

Item #	21024
Aperture	76 mm (3")
Focal Length	300 mm (f/4)
Optical Design	Reflector
Eyepieces	20 mm (15x), 4 mm (75x)
Weight	4.3 lb

FIRSTSCOPE FEATURES

- FirstScope pays tribute to the men and women who brought us one step closer to understanding the universe around us!
- High quality Dobsonian style stand with a 76 mm reflector optical tube make FirstScope an ideal entry level astronomical telescope.
- Portable and lightweight table-top design makes it easy to store, transport and setup your FirstScope Telescope.
- FirstScope is very easy to observe with, the user simply navigates the night sky by moving the tube in the direction of their desired object. Also, great for terrestrial viewing.
- Stylish and decorative design makes FirstScope a wonderful keepsake for anyone interested in astronomy.





SPECIALTY TELESCOPES

AMBASSADOR

The Ambassador Brass Refractor Telescope is an ideal decorative showpiece for the home, office, or anywhere you may want to incorporate its vintage style. Featuring a classic Altazimuth Mount and beautiful mahogany wood tripod, the Ambassador telescope is designed especially for terrestrial observing but is also capable of casual astronomical observing.



*Ambassador 80AZ
#21034*

AMBASSADOR FEATURES

- All brass optical tube, altazimuth mount, tripod hardware
- Rigid, sturdy and exquisite mahogany wood tripod
- Brass tripod accessory tray
- Erect Image Viewing through the telescope
- 2 year warranty



*Travel Scope 70
#21035*



*Travel Scope 50
#21038*

NEW!

TRAVEL SCOPE 70

This telescope was designed with traveling in mind while offering exceptional value. The Travel Scope is made of the highest quality materials to ensure stability and durability. All this adds up to a telescope that gives you a lifetime of pleasure with a minimal amount of maintenance. Featuring a compact and portable design with ample optical performance, the Travel Scope is ideal for terrestrial as well as casual astronomical observation.

TRAVEL SCOPE 50

Smaller version of the Travel Scope 70 for ultra portability. Product also includes a 3x Barlow lens (60x and 135x).

TRAVEL SCOPE FEATURES

- All coated glass optical elements for clear, crisp images
- Erect image diagonal so that your views are correctly oriented
- Smooth functioning altazimuth mount with easy pointing to locate objects
- Preassembled aluminum full size photographic tripod ensures a stable platform
- Quick and easy no-tool set up
- The telescope and tripod fit inside the custom backpack for easy traveling and storage

SPECIALTY TELESCOPES

Item #	21033	21034	21038	21035
Model	Ambassador 50AZ	Ambassador 80AZ	Travel Scope 50	Travel Scope 70
Aperture	50 mm (2")	80 mm (3.1")	50 mm (2")	70 mm (2.8")
Focal Length	360 mm f/7.2	800 mm f/10	360 mm f/7.2	400 mm f/5.7
Near Focus	50 ft	100 ft	15 ft	19 ft
Eyepieces	22 mm (16x)	25 mm (32x)	20 mm (20x), 8 mm (45x)	20 mm (20x), 10 mm (40x)
Finderscope	N/A	6x30 erect image	2x20	5x24
Coatings	Fully Coated	Fully Coated	Fully Coated	Fully Coated
Weight	12.5 lbs	28.5 lbs	2.2 lbs	3.3 lbs

POWERSEEKER® TELESOPES

**NO TOOLS ARE
REQUIRED FOR
ASSEMBLY!**



TYPES OF POWERSEEKER MOUNTS

German Equatorial Mount uses a counterweight opposite the telescope to counterbalance the weight of the telescope. The telescope may be polar aligned to track the sky and compensate for the Earth's rotation. Altazimuth Mount (or Alt-Az) moves parallel and perpendicular to the horizon. This motion is very intuitive and is especially easy to use for terrestrial viewing.

TYPES OF POWERSEEKER TELESCOPES

REFRACTOR TELESCOPES (also known as dioptrics) are what the average person identifies with the word "telescope", a long, thin tube where light passes in a straight line from the front objective lens directly to the eyepiece at the opposite end of the tube.

NEWTONIAN REFLECTOR TELESCOPES usually use a concave parabolic primary mirror to collect and focus incoming light onto a flat secondary (diagonal) mirror that in turn reflects the image out of an opening at the side of the main tube and into the eyepiece.

CELESTRON POWERSEEKER TELESCOPES

are a great way to open up the wonders of the Universe to the aspiring astronomer. The PowerSeeker series is designed to give the first-time telescope user the perfect combination of quality, value, features and power.

Amateur astronomy is a great family hobby that can be enjoyed year round, and Celestron's PowerSeekers are the ideal choice for families looking for an affordable and high

quality telescope that will provide many hours of enjoyment for children and adults alike.

PowerSeekers are quick and easy to set up – even for the novice. No tools are required for assembly! Their sturdy equatorial mounts are perfect for tracking objects in the night sky, and the collapsible alt-azimuth mounts are perfectly suited for terrestrial (land) viewing as well as astronomical use. All of Celestron's PowerSeekers include a full range of eyepieces plus a 3x Barlow lens that provides an increase in viewing power hundreds of times greater than that of the unaided eye!

PowerSeekers are powerful designs with ample optical performance to excite any newcomer to the world of amateur astronomy. All models include a pre-assembled tripod for quick "no tool" setup. PowerSeekers are available in a choice of optical tube and mount designs that include refractor, reflector, equatorial, or altazimuth mounts. PowerSeekers are designed and manufactured using all fully coated glass optical components with high transmission coatings for enhanced image brightness and clarity. PowerSeeker Newtonian reflectors offer the user larger apertures and greater light gathering power that is required to resolve the faint details of hundreds of deep-sky and other celestial objects.

ERECT IMAGE OPTICS are ideal for terrestrial (land) and astronomical (sky) use.



POWERSEEKER® TELESCOPES

PowerSeeker 70AZ
#21036

PowerSeeker 60EQ
#21043

PowerSeeker 80EQ
#21048

ALL MODELS
COME WITH
PRE-ASSEMBLED
TRIPODS AND
"THE SKYX"
PLANETARIUM
CD-ROM.

PowerSeeker 114EQ
#21045

PowerSeeker 127EQ
#21049

PowerSeeker 70EQ
#21037

PowerSeeker 50AZ
#21039

PowerSeeker 60AZ
#21041

POWERSEEKER

Item #	21043	21037	21048	21045	21049	21039	21041	21036
Model	60EQ	70EQ	80EQ	114EQ	127EQ	50AZ	60AZ	70AZ
Optical Design	Refractor	Refractor	Refractor	Reflector	Reflector	Refractor	Refractor	Refractor
Mount	German Equatorial	German Equatorial	German Equatorial	German Equatorial	German Equatorial	Altazimuth	Altazimuth	Altazimuth
Aperture	60 mm (2.4")	70 mm (2.8")	80 mm (3.1")	114 mm (4.5")	127 mm (5")	50 mm (2")	60 mm (2.4")	70 mm (2.8")
Focal Length	900 mm (f/15)	700 mm (f/10)	900 mm (f/11)	900 mm (f/8)	1000 mm (f/8)	600 mm (f/12)	700 mm (f/12)	700 mm (f/10)
Finderscope	5x24	5x24	5x24	5x24	5x24	5x24	5x24	5x24
Eyepiece	20 mm (45x) 4 mm (225x)	20 mm (35x) 4 mm (175x)	20 mm (45x) 4 mm (225x)	20 mm EI* (45x) 4 mm (225x)	20 mm EI* (50x) 4 mm (250x)	20 mm (30x) 12 mm (50x) 4 mm (150x)	20 mm (35x) 4 mm (175x)	20 mm (35x) 4 mm (175x)
Barlow Lens	3x	3x	3x	3x	3x	3x	3x	3x
Warranty	2-Year	2-Year	2-Year	2-Year	2-Year	2-Year	2-Year	2-Year

*Erect Image

ASTROMASTER® TELESCOPES

EASY TO SET-UP
AND USE,
PERFECT FOR
THE NOVICE
ASTRONOMER.



*AstroMaster 70AZ
#21061*



*AstroMaster 70EQ
#21062*

WHICH ASTROMASTER MODEL BEST FITS YOUR NEEDS?

If you're looking for a dual-purpose telescope appropriate for both terrestrial and celestial viewing, then the AstroMaster Series is for you. Each AstroMaster model is capable of giving correct views of land and sky. The AstroMaster Series produce bright, clear images of the Moon and planets. It is easy to see the moons of Jupiter and the rings of Saturn with every one of these fine instruments. For views of the brighter deep space objects like galaxies and nebulae, we recommend the larger aperture and light gathering ability of the Newtonian reflectors.

If your interest is strictly watching whales, spotting birds, viewing nature, or checking out your favorite star or planet the altazimuth-mounted models are ideal. Alt-Az models have a convenient pan handle with built-in clutch for easy targeting and smooth motion. Models featuring the German Equatorial mount are a good choice for viewing stars, nebulae, star clusters, and planets. Built-in setting circle aids in locating these objects.

ASTROMASTER FEATURES

- Quick and easy no-tool setup
- Permanently mounted StarPointer
- Erect image optics - Ideal for terrestrial and astronomical use
- Quick release dovetail attachment – no-tool setup
- Pan handle Alt-Az control with clutch – for smooth and accurate pointing (21061 and 21063)
- German Equatorial Mount with Setting circles – to accurately locate and track sky objects (21062, 31035, 21064, 31042, 31045 and 31051)
- Rugged pre-assembled tripod with 1.25" steel tube legs – Provides a rigid and stable platform
- All coated glass optics for clear, crisp images
- Deluxe accessory tray for convenient storage of accessories
- "The SkyX" Planetarium Software with 10,000 object database and enhanced images

ASTROMASTER[®] TELESOPES



AstroMaster 76EQ
#31035



AstroMaster 114EQ
#31042



AstroMaster 90AZ
#21063



AstroMaster 90EQ
#21064



AstroMaster 130EQ
#31045 / #31051

**NO TOOLS ARE REQUIRED
FOR ASSEMBLY!
ALL MODELS COME
WITH PRE-ASSEMBLED TRIPODS.**

ASTROMASTER

Item #	21061	21062	31035	21063	21064	31042	31045	31051
Model	70AZ	70EQ	76EQ	90AZ	90EQ	114EQ	130EQ	130EQ w/ Motor Drive
Optical Design	Refractor	Refractor	Reflector	Refractor	Refractor	Reflector	Reflector	Reflector
Mount	Altazimuth	CG-2 Equatorial	CG-2 Equatorial	Altazimuth	CG-3 Equatorial	CG-2 Equatorial	CG-3 Equatorial	CG-3 Equatorial
Aperture	70 mm (2.8")	70 mm (2.8")	76 mm (3")	90 mm (3.5")	90 mm (3.5")	114 mm (4.5")	130 mm (5")	130 mm (5")
Focal Length	900 mm (f/13)	900 mm (f/13)	700 mm (f/9)	1000 mm (f/11)	1000 mm (f/11)	1000 mm (f/9)	650 mm (f/5)	650 mm (f/5)
Coating	Fully Coated	Fully Coated	Aluminum	Multi-coated	Multi-coated	Aluminum	Aluminum	Aluminum
Weight	18 lbs	18 lbs	16 lbs	20 lbs	23 lbs	17 lbs	24 lbs	25 lbs

LCM COMPUTERIZED TELESOPES

AUTOMATICALLY
LOCATES
THE WONDERS OF
THE UNIVERSE
WITH ITS
MOTORIZED SYSTEM
AND ONBOARD
COMPUTER!



LCM COMPUTERIZED TELESCOPES

All glass, fully coated optics reveal the depths of our solar system and the wonders of the Universe. Fully adjustable tripod features a convenient accessory tray. Easy to use computerized hand control allows user to locate objects at the touch of a button.

LCM FEATURES

- Hand Control with 4,000+ object database and motorized Lightweight Computerized Mount
- Quick release mount, optical tube and accessory tray for no-tool setup
- SkyAlign Technology allows you to align on any three bright objects, for a fast and easy alignment process
- Includes "The SkyX" Planetarium Software FREE!
- 2 Year Warranty

LCM COMPUTERIZED TELESCOPES

Item #	22050	22051	31150
Model	60LCM	80LCM	114LCM
Aperture	60 mm (2.4")	80 mm (3.1")	114 mm (4.5")
Type	Refractor	Refractor	Reflector
Focal Length	700 mm f/12	900 mm f/11	1000 mm f/9
Eyepieces	25 mm (28x), 9 mm (78x)	25 mm (36x), 9 mm (100x)	25 mm (40x), 9 mm (111x)
Mount	Altazimuth	Altazimuth	Altazimuth
Coatings	Fully Coated	Fully Coated	Fully Coated
Weight	10 lbs	14 lbs	15 lbs

ALL MODELS COME WITH
"THE SKYX"
PLANETARIUM SOFTWARE.

LCM
COMPUTERIZED
TELESCOPES



60LCM
#22050



80LCM
#22051



114LCM
#31150

NEXSTAR SLT[®]

TELESCOPES

OUR AFFORDABLE
NOVICE TO
MID-LEVEL
COMPUTERIZED
TELESCOPE SERIES.



THE USER FRIENDLY NEXSTAR SERIES

Designed to be an affordable entry level to mid-level computerized GoTo telescope, the NexStar SLT refractors, reflectors, and Maks are available in the most popular sizes and are loaded with valuable design features. With pre-assembled, adjustable stainless steel tripods, and quick release fork arms and tubes, NexStar SLT telescopes can be set up in a matter of minutes – with no tools required!

You can see details of the lunar surface, Venus and its phases, polar caps on Mars, Jupiter and its four moons, Saturn with its rings plainly visible and much more! Most NexStar SLT's can also be used as a land-based spotting telescope.

INTELLIGENT DESIGN

Powered by 8 AA (user supplied) batteries or an optional AC adapter (#18778) these NexStar GoTo's love to travel. The internal battery compartment provides power to the high precision servo motors for rigid low-vibration performance

while eliminating cord wrap issues associated with external battery packs.

With the NexStar's ergonomically designed hand control, the user is free to remove the hand control from its holder for remote use or leave it cradled for hands-free operation. With a touch of a button you can select the object catalog, change the slew speed, view fascinating information about an object, or simply know if a desired object is visible in the sky.

CELESTRON'S REVOLUTIONARY SKYALIGN

Using Celestron's patented SkyAlign (patent pending), simply input the date, time and location into the hand control then slew the telescope to any three bright celestial objects in the sky. You do not need to know the names of the stars – you can even pick the Moon or bright planets!

NEXSTAR SLT[®] TELESCOPES



NexStar 102 SLT
#22096



NexStar 130 SLT
#31145



NexStar 90 SLT Mak
#22087



NexStar 127 SLT Mak
#22097



NEXSTAR SLT FEATURES AND ACCESSORIES

- Computerized hand control with 4,000+ object database
- Quick-release fork arm mount, optical tube and accessory tray for quick no-tool set up
- SkyAlign allows you to align on any three bright celestial objects, for a fast and easy alignment process
- Comes with "The SkyX" Planetarium Software and NSOL telescope control software for controlling your telescope via computer
- Internal battery compartment to prevent cord wrap during use
- Sturdy stainless steel tripod
- StarPointer finderscope to help with alignment
- Auxiliary port for additional accessories such as GPS accessory
- Motorized altazimuth mount and fully computerized hand control
- U.S. and International city database to easily set your location
- Flash upgradeable hand control software and motor control units
- Operates in both AC and DC (AC requires an optional adapter)
- 2 Year Warranty

NEXSTAR SLT

Item #	22096	31145	22087	22097
Model	NexStar 102SLT	NexStar 130SLT	NexStar 90SLT	NexStar 127SLT
Optical Design	Refractor	Reflector	Maksutov-Cassegrain	Maksutov-Cassegrain
Mount	Altazimuth	Altazimuth	Altazimuth	Altazimuth
Aperture	102 mm (4")	130 mm (5")	90 mm (3.5")	127 mm (5")
Focal Length	660 mm f/6.5	650 mm f/5	1250 mm f/14	1500 mm f/12
Eyepieces	25 mm (26x), 9 mm (73x)	25 mm (26x), 9 mm (62x)	25 mm (50x), 9 mm (139x)	25 mm (60x), 9 mm (167x)
Finderscope	StarPointer	StarPointer	StarPointer	StarPointer
Weight	14 lbs	18 lbs	12 lbs	18 lbs

SKYSCOUT® AND ACCESSORIES

SKYSCOUT® PERSONAL PLANETARIUM®

The Award-winning SkyScout is a revolutionary handheld device that uses advanced GPS technology with point and click convenience to identify thousands of stars, planets, constellations and more.

IDENTIFY: Simply point the SkyScout at any object in the sky and click the “target” button. The SkyScout will tell you what object you are looking at.

LOCATE: To locate a star or planet, select the object’s name from the menu and follow the directional arrows through the viewfinder. SkyScout tells you when you are on target. It’s that easy!

LEARN: Once you have targeted an object, the real fun begins. The SkyScout provides entertaining and educational audio and text information; including facts, trivia, history and mythology about our most popular celestial objects.

SKYSCOUT FEATURES

- Uses GPS technology to identify over 6,000 celestial objects with the click of a button
- Locate stars, planets, constellations and more
- Simple – just turn it on and it’s ready to use
- Includes “Tonight’s Highlights”, a customized list of the 20 best objects to view for your exact date, time and location anywhere in the world
- Audio and in-depth text descriptions provide history, mythology and other information for the most popular objects
- Take a guided tour through all 88 constellations and even see on-screen constellation maps
- Bring it anywhere – durable, compact and light design makes it easy
- Database can be updated with new objects, comets, etc.
- Includes: carrying case, earphones, battery sleeves, USB cable and CD-ROM with user manual and tutorial



SkyScout Personal Planetarium #93970

SKYSCOUT ACCESSORIES

Celestron is proud to offer these exciting accessories that will enhance your journey through the cosmos while using the SkyScout. All accessories are designed for easy set-up and use with the SkyScout Personal Planetarium.

SKYSCOUT SCOPE –

Designed exclusively for use with the SkyScout Personal Planetarium. Simply attach the SkyScout to the specially designed mount to locate and identify celestial objects. Once the SkyScout has located or identified an object it’s time to take your celestial experience to the next level and use the SkyScout Scope to get a closer look at the wonders of the universe.



SkyScout Scope #21068

SKYSCOUT SCOPE 90 FEATURES

- Designed with non-magnetic materials that do not interfere with the SkyScout sensors
- Quick and easy no-tool setup
- 90 mm refractor optical design with all coated glass optics and 660 mm (f/7) focal length for crisp, clear images
- Erect image 6x30 finderscope with quick-release bracket
- Erect image optics are ideal for terrestrial and astronomical use



SKYSCOUT CONNECT FEATURES

- Allows the SkyScout Personal Planetarium to be connected directly to Celestron computerized telescopes. Locate any object in the SkyScout database and your computerized telescope will slew to the same object with a touch of a button.

SkyScout Connect #93980

SKYSCOUT EXPANSION CARDS FEATURES

- The Expansion Cards add to the knowledge base of your SkyScout Personal Planetarium. Not only does it show you the objects in the sky but now it can answer many of the mystifying questions about the Universe.



Astronomy for Beginners #93991



All About the Stars #93992

RECHARGEABLE SKYSCOUT SPEAKER FEATURES

- Rechargeable Lithium-Ion battery
- Extension cable – for flexible placement of speaker
- Nylon Lanyard – to hang the speaker around your neck
- Expandable woofer – for optimum sound quality



SkyScout Speaker #93985

HANDHELD DIGITAL MICROSCOPE

Ideally suited for examining objects such as coins, stamps, rocks, relics, insects, plants, gems, circuit boards, various materials, skin and many other objects. You can also examine specimen slides.

STANDARD FEATURES INCLUDE

- Handheld digital microscope
- 10x to 40x and 150x Digital Power
- 1.3mp digital camera for snapshots and video
- LED illuminator
- Photo management software
- Powered by USB 2.0 cable
- Metal stand to hold the microscope steady
- Size – 4.25" (108 mm) x 1.25" (32 mm)
- Weight – 4oz (113g)



#44302

HANDHELD DIGITAL AND OPTICAL MICROSCOPE

Ideally suited for examining objects such as coins, stamps, rocks, relics, insects, plants, gems, circuit boards, various materials, skin, and many other objects. You can also examine specimen slides.

STANDARD FEATURES INCLUDE

- Handheld digital and optical microscope
- 20x to 40x, and 200x Digital Power
- 2mp digital camera for snapshots and video with attached USB 2.0 cable
- Adjustable brightness LED illumination
- 20x eyepiece for optical viewing – 4x to 8x, and 50x Power
- ArcSoft Photo software
- Powered by two AAA batteries (user supplied)
- Size – 2" (51 mm) x 1.25" (32 mm) x 3.5" (89 mm)
- Weight – 2oz (57g)



#44306

DIGITAL MICROSCOPE KIT

This multi-purpose microscope can be used as a traditional microscope with powers up to 600x or attach the digital camera to view on your computer. It's the perfect tool for discovering and learning about the world we can't see. Included software allows you to save digital images and video to your computer.

STANDARD FEATURES INCLUDE

- Biological microscope with powers from 40x to 600x
- Zoom eyepiece from 10x to 20x
- 4x, 15x, 30x objective lenses
- Digital camera
- Top and bottom electric illumination
- Imaging software included on CD-ROM
- 3 prepared slides, rocks and honeybee wing
- Weight 22 oz.

DIGITAL CAMERA SOFTWARE SYSTEM REQUIREMENTS:

- Windows 98/98SE/2000/ME/XP/Vista/7
- CD/DVD drive & open USB port



#44320

DIGITAL AND OPTICAL MICROSCOPE

STANDARD FEATURES INCLUDE

- Digital and optical biological microscope – ideally suited for examining specimen slides
- 2mp digital camera for viewing or imaging with attached USB 2.0 cable
- Digital Power up to 2000x
- 20x Eyepiece
- Objective Lenses – 5x (100 power), 10x (200 power), 20x (400 power)
- Metal body
- Bottom LED Illuminator with adjustable brightness
- Powered by two AAA batteries (user supplied)
- ArcSoft Photo software
- 3 prepared slides
- Weight – 19oz (539g)



#44330

DIGITAL MICROSCOPES

**GREAT PRODUCTS
FOR TEENS AS
WELL AS ADULTS
FOR EDUCATION,
DISCOVERY,
WORK AND FUN.**

DIGITAL MICROSCOPES

BREAKTHROUGH IN MICROSCOPE TECHNOLOGY!



#44340

LCD DIGITAL MICROSCOPE

Replaces traditional eyepieces with an LCD screen for easy and comfortable viewing for yourself and to share with others. Taking images or video is a snap.

STANDARD FEATURES INCLUDE

- Compound (Biological) Microscope ideally suited for examining specimen slides
- 40x to 400x Power – up to 1600x Power with Digital Zoom
- 3.5" (88 mm) LCD Screen with 4x Digital Zoom
- Built-in Digital Camera – 2mp
- Top and Bottom LED Illumination
- Mechanical Stage – 3.5" x 3.5" (88 mm x 88 mm)
- 512MB Internal Storage Memory
- SD Card Slot
- Five Prepared Slides
- Objective Lenses – 4x, 10x, and 40x
- Six Position Color Filter Wheel
- USB Cable for Transferring Images to a PC
- AC Adaptor to Power the Microscope
- Carrying Case Included
- Weight – 51 oz (1446g)
- Two Year Limited Warranty



DELUXE DIGITAL MICROSCOPE

Celestron has developed the first digital LCD microscope with a 3.5" touch screen panel that is also rotatable 180° for sharing the view on the screen. Also come with a built-in digital camera you can take snapshots or video using the built-in flash memory or use an optional SD Card and then later upload your images to your computer.

Deluxe features include a 6-volt battery pack for field usage, top and bottom adjustable illumination, dual focusing, universal AC Adapter, and more ...

#44345



STANDARD FEATURES INCLUDE

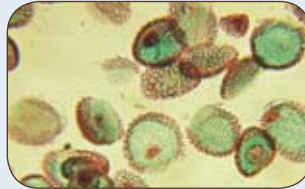
- 3.5" TFT Touch Screen Panel – rotatable 180° horizontally
- Built-in Digital Camera – 3mp CMOS Sensor
- Image Capture Capability – Snapshots and Video
- Quadruple Nosepiece with 4x/10x/20x/40x Objective Lenses
- 4.5x Digital Zoom
- Power Range from 40x to 1800x
- 1GB Internal Memory
- SD Card Slot (uses optional SD Cards up to 4GB)
- Mechanical Stage – 3.5" x 3.5" (88mm x 88mm)
- Dual Focus (Coarse & Fine)
- Top & Bottom Adjustable LED Illumination
- Filter Wheel with 3-position Diaphragm
- USB 2.0 Cable (used to upload images to a computer)
- 7 pcs. Prepared Slides
- AC Adapter - Universal 110 to 240 volts with multi-plugs for virtual worldwide usage
- 6-volt (4AA user supplied batteries) battery pack for field use
- Carrying Case
- Weight – 60oz (1.7kg)

DIGITAL MICROSCOPES

LCD DIGITAL MICROSCOPE

This innovative microscope design allows you to view specimens on the LCD screen which provides for comfortable viewing for the individual and small groups. The digital camera allows you to take snapshot images or short videos.

Ideally suited for examining specimen slides of yeasts and molds, cultures, plant and animal parts, fibers, bacteria, etc.



STANDARD FEATURES INCLUDE

- Digital biological microscope
- View with 2" LCD screen
- 24x to 240x Power and up to 1920x with 8x digital zoom
- Built-in 2mp digital camera
- 32MB internal memory
- Objective Lenses – 4x, 10x, and 40x
- USB 2.0 cable
- SD card slot
- Bottom LED illumination
- Slide holder
- AC adapter
- Five prepared slides
- Weight – 28oz (794g)



#44342

THESE MULTIPURPOSE MAGNIFIERS CAN BE USED FOR A VARIETY OF FUNCTIONS:

- Hobbyists – coins, stamps, gems, etc.
- Discovery, Education & Adventure – insects, plants, bugs, rocks, etc.
- Quality Control – inspection of PC boards, materials, etc.
- Jewelry Inspection – gem quality, engraving, etc.

MAGNIFYING GLASSES AND LOUPES

NEW!



**HANDHELD
ILLUMINATED
MAGNIFIER**

#44802

- 2x Power
- 3.5" (90 mm) Diameter High Quality Acrylic Lens
- Inset Lens of 8x Power with 0.7" (18 mm) Diameter
- LED Illumination
- Dimensions – 8.8"x3.6"x0.8" (224 mm x 91 mm x 20 mm)
- Weight – 5.4 oz (153g)



**HANDHELD
ILLUMINATED
MAGNIFIER
WITH STAND**

#44803

- 2x Power
- 4.25" (108 mm) Diameter High Quality Acrylic Lens
- Inset Lens of 4x Power with 1" (25 mm) Diameter
- LED Illumination
- Dimensions – 8.8"x4.5"x0.6" (224 mm x 114 mm x 15 mm)
- Weight – 4.2 oz (119g)

HANDHELD ILLUMINATED MAGNIFIERS (LOUPE)



#44800

- 10x Power
- 21 mm (0.8") Diameter
- Glass Triplet Lens
- Dimensions – 4.6"x1.6"x1.4" (117 mm x 41 mm x 36 mm)
- Weight – 4.2 oz (119g)



#44801

- 10x Power
- 21 mm (0.8") Diameter
- LED Illumination
- Glass Triplet Lens
- Dimensions – 2.0"x1.2"x0.9" (51 mm x 30 mm x 23 mm)
- Weight – 2.0 oz (57g)

BINOCULARS

SEE PAGES 3-14

UpCLOSE
OUTLAND
NATURE
SPECIALTY
SkyMASTER



SPOTTING SCOPES

SEE PAGES 15-21

ULTIMA
REGAL F-ED
MINI MAK
MAK
C5
REFRACTOR
VISTAPIX IS70
ELECTRIC ZOOM



TELESCOPES

SEE PAGES 22-31

FIRSTSCOPE
SPECIALTY
POWERSEEKER
ASTROMASTER
LCM
NEXSTAR SLT



MICROSCOPES

SEE PAGES 33-35

HANDHELD DIGITAL
HANDHELD DIGITAL AND OPTICAL
DIGITAL MICROSCOPE KIT
LCD



ABOUT CELESTRON

FOR FIVE DECADES, CELESTRON HAS BEEN RECOGNIZED AS ONE OF THE WORLD'S LEADING DESIGNERS AND MANUFACTURERS OF HIGH QUALITY COMPUTERIZED AND NON-COMPUTERIZED TELESCOPES, BINOCULARS, SPOTTING SCOPES, MICROSCOPES, AND RELATED ACCESSORIES.

THE FOUNDATION OF CELESTRON'S COMMITMENT TO PRODUCT DESIGN AND ENGINEERING INNOVATION IS BASED UPON ITS LONGSTANDING ABILITY TO MANAGE AND CONTROL ALL ASPECTS OF THE DESIGN-TO-MARKET PROCESS. CELESTRON'S STAFF OF EXPERIENCED ENGINEERS, INDUSTRIAL DESIGNERS, AND OPTICAL EXPERTS ARE CONSISTENTLY IMPROVING AND REFINING OUR PRODUCTS AS WELL AS DEVELOPING NEW PRODUCTS AND TECHNOLOGIES FOR OUR CUSTOMERS.

CELESTRON'S PASSION FOR CONTINUOUS PRODUCT IMPROVEMENT, INNOVATION, AND DESIGN EXCELLENCE ENSURES PRODUCTS THAT PROVIDE OUR CUSTOMERS WITH YEARS OF ENJOYMENT, RELIABILITY, AND, MOST IMPORTANT — VALUE.

FOR MORE INFORMATION ON THE ENTIRE CELESTRON PRODUCT LINE OR TO FIND A DEALER NEAR YOU PLEASE VISIT US AT: WWW.CELESTRON.COM



PERFORMANCE • INNOVATION • VALUE

2835 Columbia Street • Torrance, CA 90503 U.S.A. • 310.328.9560 • www.celestron.com

93717-10

The photographs appearing in this catalog are for graphic illustration purposes only and do not represent objects or subjects viewed or photographed using the products described. All items designated TM or ® are trademarks or registered trademarks of Celestron or the specific companies designated. Product designs and specifications are subject to change or modification without prior notification. Designed and intended for those 13 years of age and older. © 2010 Celestron